

archexteriors

2012



Have you ever wanted to make professional exterior renderings? Do you know how to use V-RaySun, V-RaySky and V-RayPhysicalCamera? Have you ever had problems with composition? Archexteriors will end all your problems. Take a look at this 10 fully textured scenes with professional shaders and lighting ready to render. Get your own portfolio and join cg market.



scene 1



scene 1 - wire

Software and models © 2012 EVERMOTION. EVERMOTION logo is trademark or registered trademark of Evermotion Inc. in the U.S. and/or other countries. All rights reserved. All *.max models included on this DVDROM with data are an integral part of „archexteriors vol.17” and the resale of this data is strictly prohibited. All models can be used for commercial purposes only by owners who bought this DVDROM. The sharing of DVDROM data is strictly prohibited unless that user has written authorization from EVERMOTION.

archexteriors

2012



Have you ever wanted to make professional exterior renderings? Do you know how to use V-RaySun, V-RaySky and V-RayPhysicalCamera? Have you ever had problems with composition? Archexteriors will end all your problems. Take a look at this 10 fully textured scenes with professional shaders and lighting ready to render. Get your own portfolio and join cg market.



scene 2



scene 2 - wire

Software and models © 2012 EVERMOTION. EVERMOTION logo is trademark or registered trademark of Evermotion Inc. in the U.S. and/or other countries. All rights reserved. All *.max models included on this DVDROM with data are an integral part of „archexteriors vol.17” and the resale of this data is strictly prohibited. All models can be used for commercial purposes only by owners who bought this DVDROM. The sharing of DVDROM data is strictly prohibited unless that user has written authorization from EVERMOTION.

archexteriors

2012



Have you ever wanted to make professional exterior renderings? Do you know how to use V-RaySun, V-RaySky and V-RayPhysicalCamera? Have you ever had problems with composition? Archexteriors will end all your problems. Take a look at this 10 fully textured scenes with professional shaders and lighting ready to render. Get your own portfolio and join cg market.



scene 3



scene 3 - wire

Software and models © 2012 EVERMOTION. EVERMOTION logo is trademark or registered trademark of Evermotion Inc. in the U.S. and/or other countries. All rights reserved. All *.max models included on this DVDROM with data are an integral part of „archexteriors vol.17” and the resale of this data is strictly prohibited. All models can be used for commercial purposes only by owners who bought this DVDROM. The sharing of DVDROM data is strictly prohibited unless that user has written authorizati on from EVERMOTION.

archexteriors

2012



Have you ever wanted to make professional exterior renderings? Do you know how to use V-RaySun, V-RaySky and V-RayPhysicalCamera? Have you ever had problems with composition? Archexteriors will end all your problems. Take a look at this 10 fully textured scenes with professional shaders and lighting ready to render. Get your own portfolio and join cg market.



scene 4



scene 4 - wire

Software and models © 2012 EVERMOTION. EVERMOTION logo is trademark or registered trademark of Evermotion Inc. in the U.S. and/or other countries. All rights reserved. All *.max models included on this DVDROM with data are an integral part of „archexteriors vol.17” and the resale of this data is strictly prohibited. All models can be used for commercial purposes only by owners who bought this DVDROM. The sharing of DVDROM data is strictly prohibited unless that user has written authorization from EVERMOTION.

archexteriors

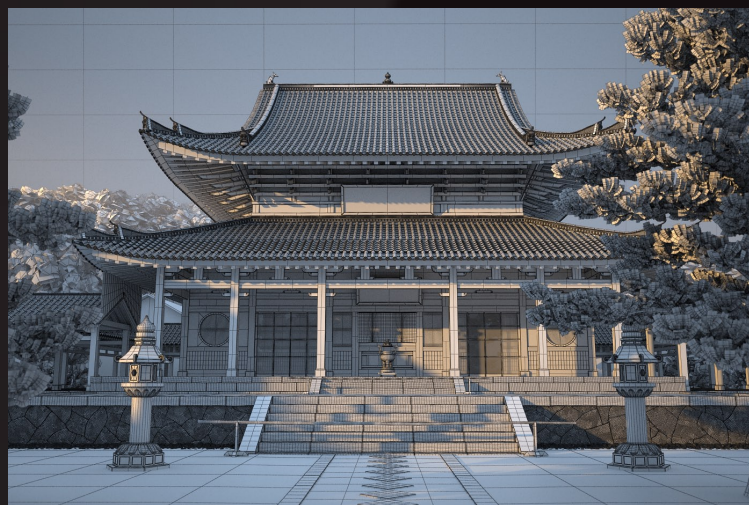
2012



Have you ever wanted to make professional exterior renderings? Do you know how to use V-RaySun, V-RaySky and V-RayPhysicalCamera? Have you ever had problems with composition? Archexteriors will end all your problems. Take a look at this 10 fully textured scenes with professional shaders and lighting ready to render. Get your own portfolio and join cg market.



scene 5



scene 5 - wire

Software and models © 2012 EVERMOTION. EVERMOTION logo is trademark or registered trademark of Evermotion Inc. in the U.S. and/or other countries. All rights reserved. All *.max models included on this DVDROM with data are an integral part of „archexteriors vol.17” and the resale of this data is strictly prohibited. All models can be used for commercial purposes only by owners who bought this DVDROM. The sharing of DVDROM data is strictly prohibited unless that user has written authorizati on from EVERMOTION.

archexteriors

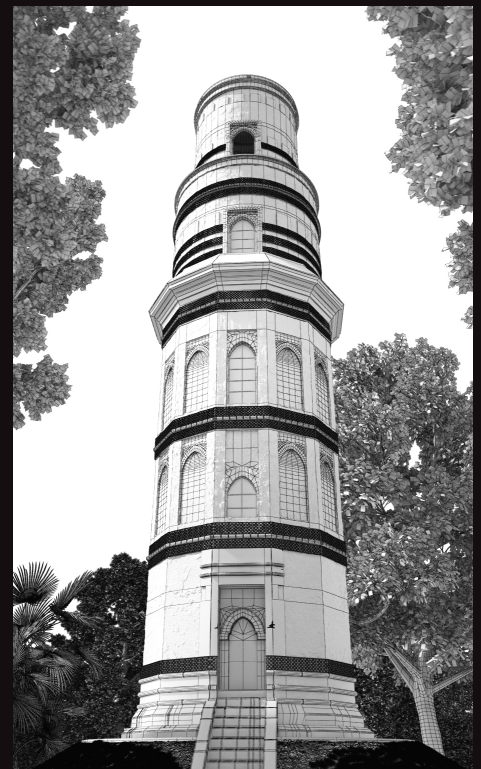
2012



Have you ever wanted to make professional exterior renderings? Do you know how to use V-RaySun, V-RaySky and V-RayPhysicalCamera? Have you ever had problems with composition? Archexteriors will end all your problems. Take a look at this 10 fully textured scenes with professional shaders and lighting ready to render. Get your own portfolio and join cg market.



scene 6



scene 6 - wire

Software and models © 2012 EVERMOTION. EVERMOTION logo is trademark or registered trademark of Evermotion Inc. in the U.S. and/or other countries. All rights reserved. All *.max models included on this DVDROM with data are an integral part of „archexteriors vol.17” and the resale of this data is strictly prohibited. All models can be used for commercial purposes only by owners who bought this DVDROM. The sharing of DVDROM data is strictly prohibited unless that user has written authorizati on from EVERMOTION.

archexteriors

2012



Have you ever wanted to make professional exterior renderings? Do you know how to use V-RaySun, V-RaySky and V-RayPhysicalCamera? Have you ever had problems with composition? Archexteriors will end all your problems. Take a look at this 10 fully textured scenes with professional shaders and lighting ready to render. Get your own portfolio and join cg market.



scene 7



scene 7 - wire

Software and models © 2012 EVERMOTION. EVERMOTION logo is trademark or registered trademark of Evermotion Inc. in the U.S. and/or other countries. All rights reserved. All *.max models included on this DVDROM with data are an integral part of „archexteriors vol.17” and the resale of this data is strictly prohibited. All models can be used for commercial purposes only by owners who bought this DVDROM. The sharing of DVDROM data is strictly prohibited unless that user has written authorizati on from EVERMOTION.

archexteriors

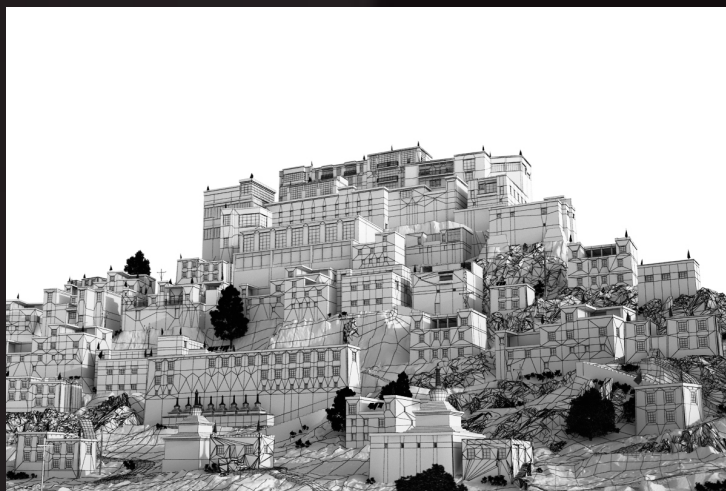
2012



Have you ever wanted to make professional exterior renderings? Do you know how to use V-RaySun, V-RaySky and V-RayPhysicalCamera? Have you ever had problems with composition? Archexteriors will end all your problems. Take a look at this 10 fully textured scenes with professional shaders and lighting ready to render. Get your own portfolio and join cg market.



scene 8



scene 8 - wire

Software and models © 2012 EVERMOTION. EVERMOTION logo is trademark or registered trademark of Evermotion Inc. in the U.S. and/or other countries. All rights reserved. All *.max models included on this DVDROM with data are an integral part of „archexteriors vol.17” and the resale of this data is strictly prohibited. All models can be used for commercial purposes only by owners who bought this DVDROM. The sharing of DVDROM data is strictly prohibited unless that user has written authorizati on from EVERMOTION.

archexteriors

2012



Have you ever wanted to make professional exterior renderings? Do you know how to use V-RaySun, V-RaySky and V-RayPhysicalCamera? Have you ever had problems with composition? Archexteriors will end all your problems. Take a look at this 10 fully textured scenes with professional shaders and lighting ready to render. Get your own portfolio and join cg market.



scene 9



scene 9 - wire

Software and models © 2012 EVERMOTION. EVERMOTION logo is trademark or registered trademark of Evermotion Inc. in the U.S. and/or other countries. All rights reserved. All *.max models included on this DVDROM with data are an integral part of „archexteriors vol.17” and the resale of this data is strictly prohibited. All models can be used for commercial purposes only by owners who bought this DVDROM. The sharing of DVDROM data is strictly prohibited unless that user has written authorization from EVERMOTION.

archexteriors

2012



Have you ever wanted to make professional exterior renderings? Do you know how to use V-RaySun, V-RaySky and V-RayPhysicalCamera? Have you ever had problems with composition? Archexteriors will end all your problems. Take a look at this 10 fully textured scenes with professional shaders and lighting ready to render. Get your own portfolio and join cg market.



scene 10



scene 10 - wire

Software and models © 2012 EVERMOTION. EVERMOTION logo is trademark or registered trademark of Evermotion Inc. in the U.S. and/or other countries. All rights reserved. All *.max models included on this DVDROM with data are an integral part of „archexteriors vol.17” and the resale of this data is strictly prohibited. All models can be used for commercial purposes only by owners who bought this DVDROM. The sharing of DVDROM data is strictly prohibited unless that user has written authorizati on from EVERMOTION.